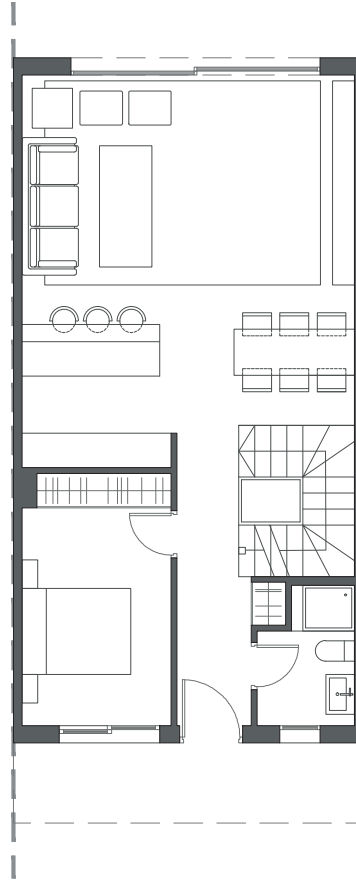


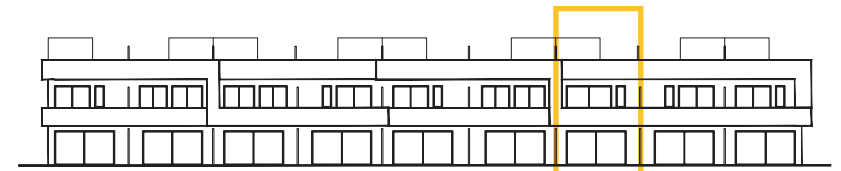

LA VALVEGA
de La Cala



GROUND FLOOR A

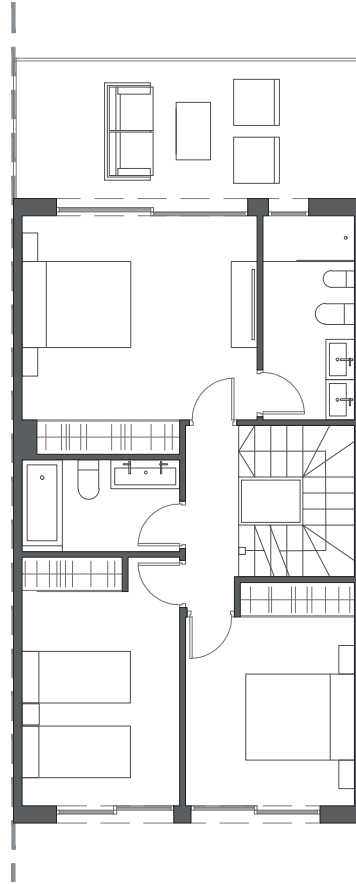
HOUSE 13 - BLOCK 2

TYPE 1-A - LEFT



Interior view

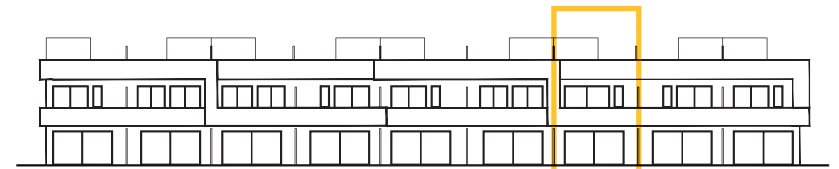

LA VALVEGA
de La Cala



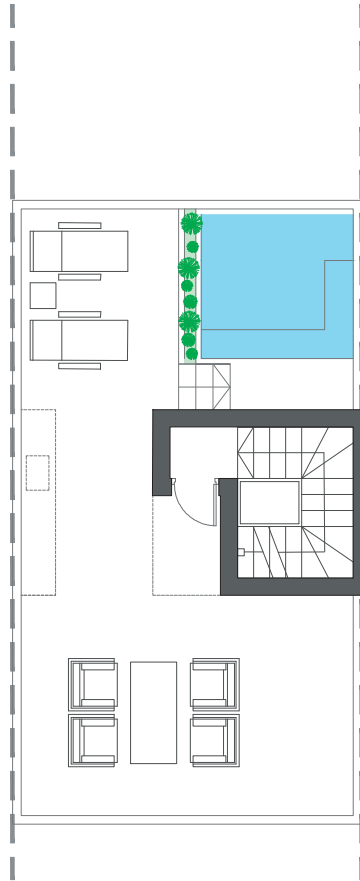
FIRST FLOOR A

HOUSE 13 - BLOCK 2

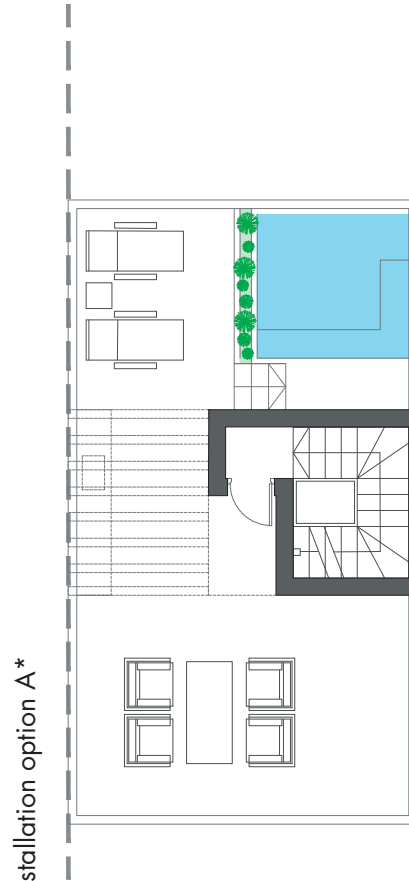
TYPE 1-A - LEFT



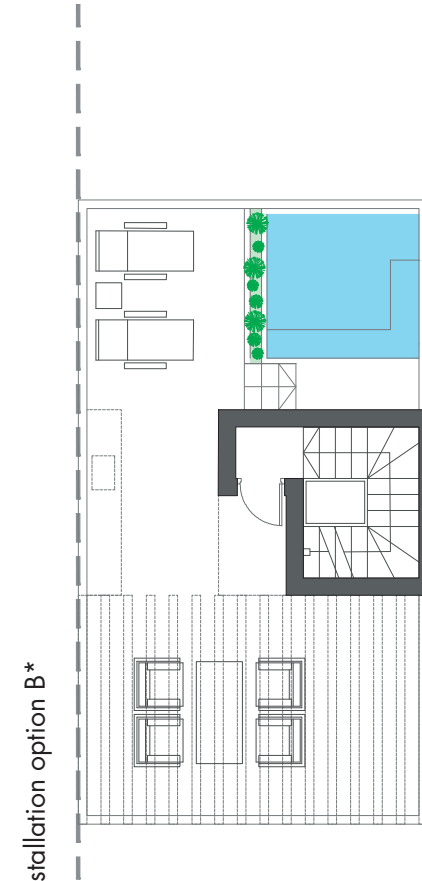
Interior view



ROOFTOP



ROOFTOP

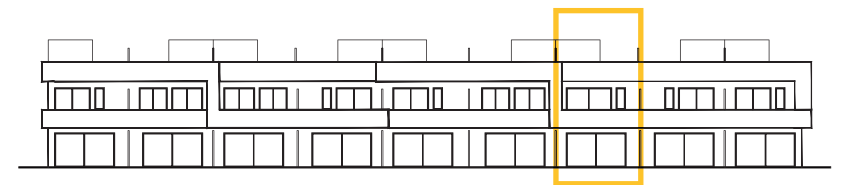


ROOFTOP

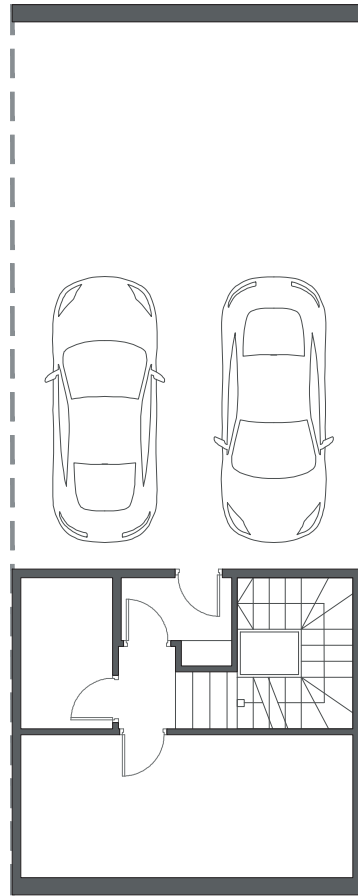
HOUSE 13 - BLOCK 2

TYPE 1-A - LEFT

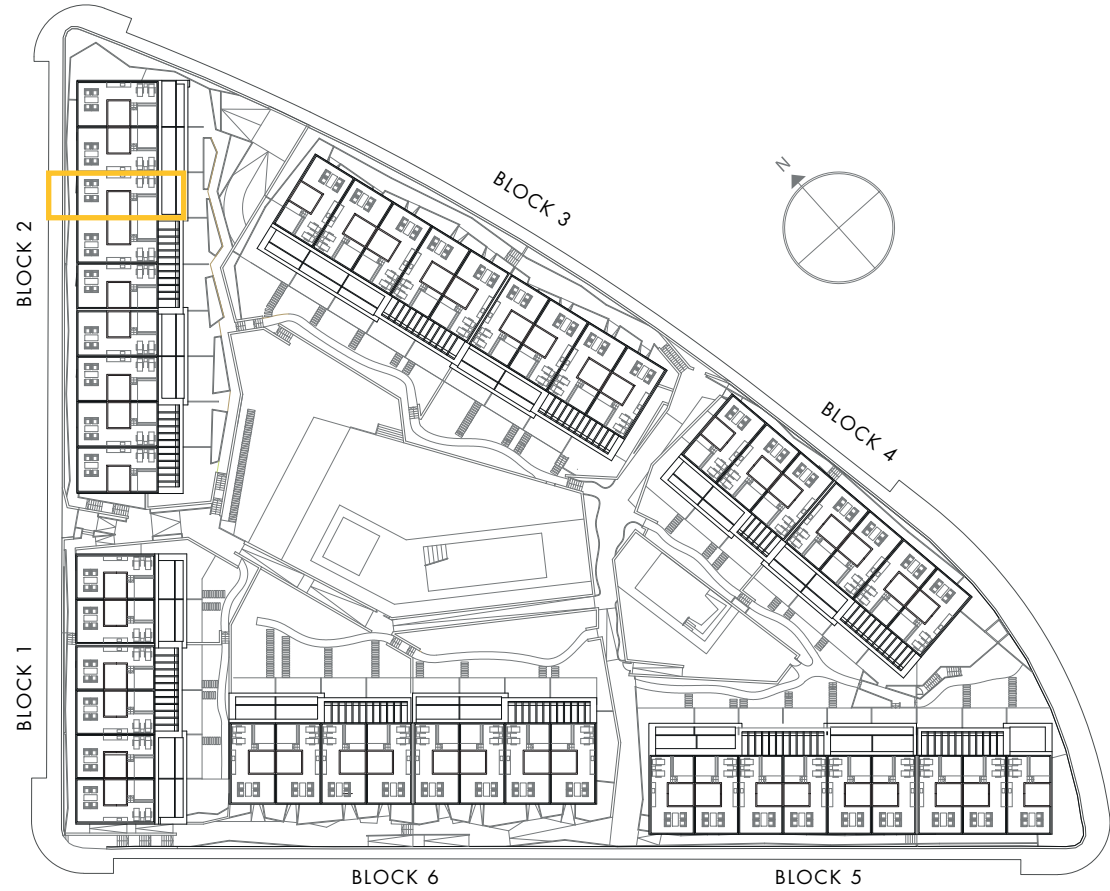
*These options only include the pre-installation for a pergola, which the client can install in the desired configuration.



Interior view

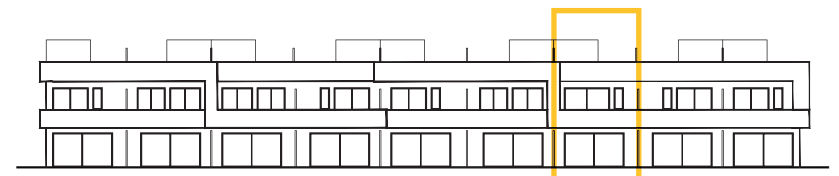


BASEMENT



HOUSE 13 - BLOCK 2

TYPE 1-A - LEFT



Interior view