

SUNSET GOLF

## NEW APARTMENTS & TOWNHOUSES

NUEVOS APARTAMENTOS Y ADOSADAS

From only *desde sólo*

**199.000€**

AMAZING SEA  
& GOLF VIEWS

VISTAS IMPRESIONANTES  
AL MAR Y AL GOLF





PRICES FROM  
PRECIOS DESDE  
**199.000€**

SUNSETGOLF

Welcome to Sunset Golf apartments & townhouses, a new Mediterranean style complex with a stunning natural frontline golf surrounding, ready to move into.

*Bienvenidos a Sunset Golf apartamentos y adosadas, una nueva urbanización de estilo Mediterráneo, rodeada de un precioso entorno con vistas al golf, y listos para entrar a vivir.*

# WHERE GOLF AND SEA MEET

*DONDE EL MAR Y EL GOLF SE ENCUENTRAN*

Located in the sought after area of La Resina Golf & Country Club, Estepona, a desirable location of luxury villas and amazing sea view properties, at only 1.3 km to the beach.

The vibrant city of Estepona is located at a mere 5 minutes away, as well as the international Marbella and Puerto Banús, with its cosmopolitan atmosphere.

An array of International Golf Courses, and local amenities are located at a 2 minutes quick drive, as well as shopping areas and fine dining restaurants.

*Situado en la prestigiosa zona de La Resina Golf & Country Club, Estepona, una atractiva ubicación rodeada de villas de lujo e increíbles propiedades con vistas al mar, a solo 1.3 km de la playa.*

*La vibrante ciudad de Estepona se encuentra a tan sólo 5 minutos de distancia, así como la internacional Marbella y Puerto Banús, con su ambiente cosmopolita.*

*Una variedad de campos de golf internacionales y servicios locales se encuentran a sólo 2 minutos en coche, así como de áreas comerciales y restaurantes de alta cocina.*

SUNSETGOLF

NEW EXCLUSIVE  
COMERCIAL CENTER  
COMING SOON!  
¡NUEVO PROYECTO DE  
CENTRO COMERCIAL!





## A LOVELY MEDITERRANEAN STYLE

*UN PRECIOSO ESTILO MEDITERRÁNEO*

The complex benefits from a privileged top-of-the-hill location, with a convenient south to south-west facing orientation, to enjoy the privileged Spanish weather and the stunning sea & golf views from nearly every apartment.

The impressive development enjoys a large communal swimming pool, with dressing area, lush tropical gardens that are criss-crossed by charming pathways, and 24 h security including video surveillance.

*El complejo se beneficia de una ubicación privilegiada, al estar situado en lo alto de la colina, con una conveniente orientación sur-suroeste, ideal para disfrutar del privilegiado clima español y las impresionantes vistas al mar y al golf desde casi todos los apartamentos.*

*Sunset Golf cuenta con una gran piscina comunitaria con vestuarios, exuberantes jardines tropicales con caminos dentro de la urbanización, y seguridad 24 horas junto con video vigilancia.*

LARGE POOL  
WITH TROPICAL  
GARDENS

GRAN PISCINA Y JARDINES  
TROPICALES

SUNSETGOLF

# LARGE TERRACES WITH VIEWS

GRANDES TERRAZAS CON VISTAS

Inside, the apartments benefit from fully fitted kitchens with Siemens & Bosch appliances, fitted wardrobes, air conditioning, fitted bathrooms, double glazing, reinforced security door, porcelain tiles in floors, entry phone, safe in the master bedroom, and large terraces. In addition, the penthouses and townhouses benefit from Jacuzzis in the terraces, to relax while enjoying the fantastic sea views. A storage and secure underground parking space is included in every apartment.

*En el interior, los apartamentos disfrutan de cocinas totalmente equipadas con electrodomésticos Siemens y Bosch, armarios empotrados, aire acondicionado, baños equipados, doble acristalamiento, puerta de entrada de seguridad, suelo porcelánico, video portero, caja fuerte en el dormitorio principal y amplias terrazas. Además, los áticos y adosadas se benefician de Jacuzzis en las terrazas, ideal para relajarse mientras disfruta de las fantásticas vistas al mar. Todas las propiedades incluyen garaje y trastero.*

SUNSETGOLF

JACUZZIS  
IN PENTHOUSES  
& TOWNHOUSES

JACUZZIS EN ÁTICOS  
Y ADOSADAS





FULLY  
LICENSED  
& READY TO  
MOVE INTO!

¡LISTOS PARA ENTRAR  
A VIVIR!



## FEATURES AT SUNSET GOLF

CARACTERÍSTICAS SUNSET GOLF

- South facing apartments, penthouses & townhouses
- Privileged top-of-the-hill location
- Stunning sea, coastal & golf views
- Only 1.3 km from the beach
- Large terraces with Jacuzzis
- Tropical gardens with large communal pool
- Fully fitted kitchens (Siemens & Bosch appliances)
- Air conditioning throughout
- Fitted wardrobes
- 24 h security including video surveillance
- Underground parking & storage
- Apartamentos, áticos y adosadas con orientación sur
- Ubicación privilegiada en la cima de la colina
- Impresionantes vistas al mar, a la costa y al golf
- A solo 1.3 km de la playa
- Grandes terrazas con Jacuzzis
- Jardines tropicales con gran piscina comunitaria
- Cocinas equipadas (electrodomésticos Siemens y Bosch)
- Aire acondicionado en todas las habitaciones
- Armarios empotrados
- Seguridad 24 horas, incluida video vigilancia
- Garajes subterráneos & trasteros

SUNSETGOLF

# PRICES

PRECIOS

2 bed apartments from only 199.000€

3 bed apartments from only 269.000€

1 bed Penthouses from only 231.000€

2 bed Penthouses from only 279.000€

2 bed Townhouses only 449.000€

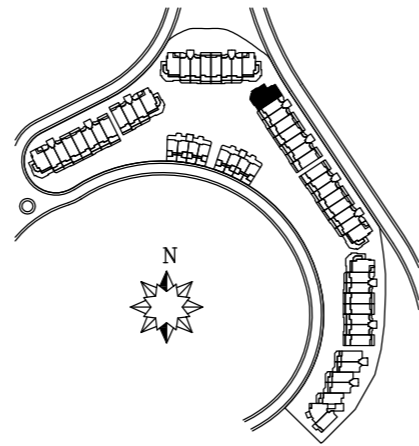
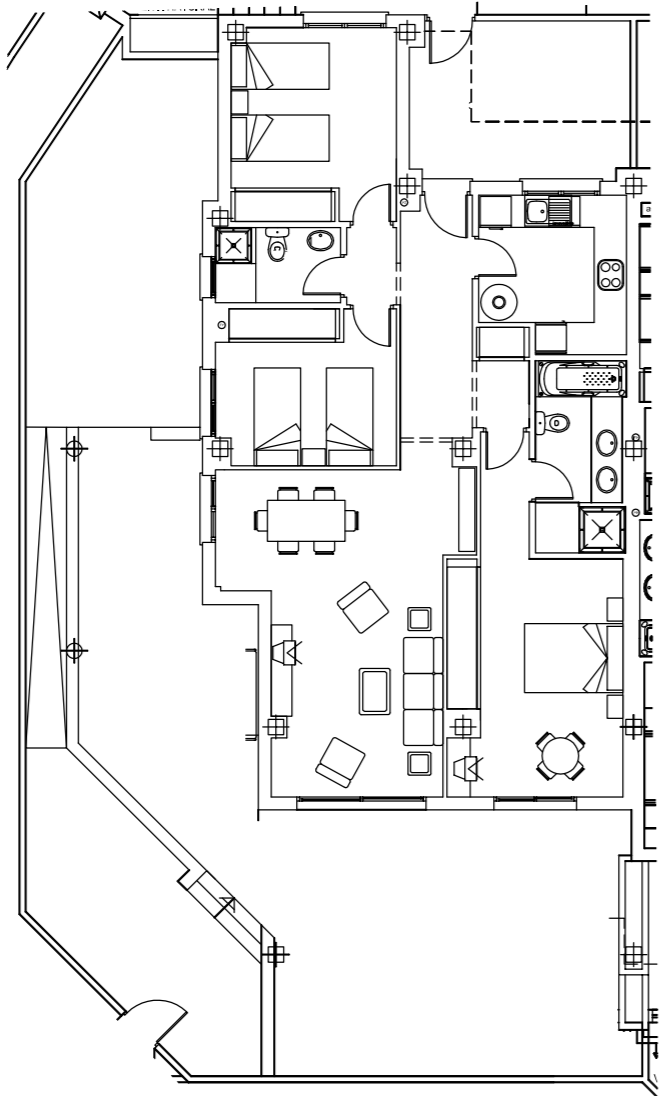
3 bed Townhouses only 429.000€

SUNSETGOLF

Sunset Golf, the perfect combination of around 320 days a year of sunny weather, amazing sea views and beautiful golf surroundings!

*Sunset Golf, la combinación perfecta de 320 días de sol al año, increíbles vistas al mar y preciosos entornos de campos de golf.*

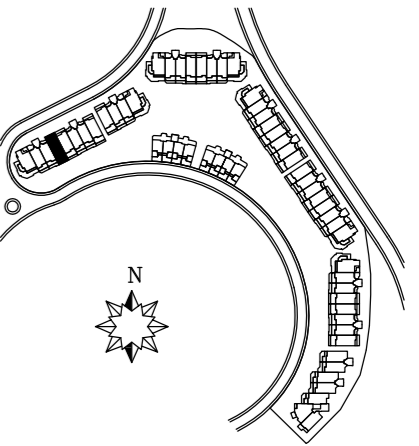
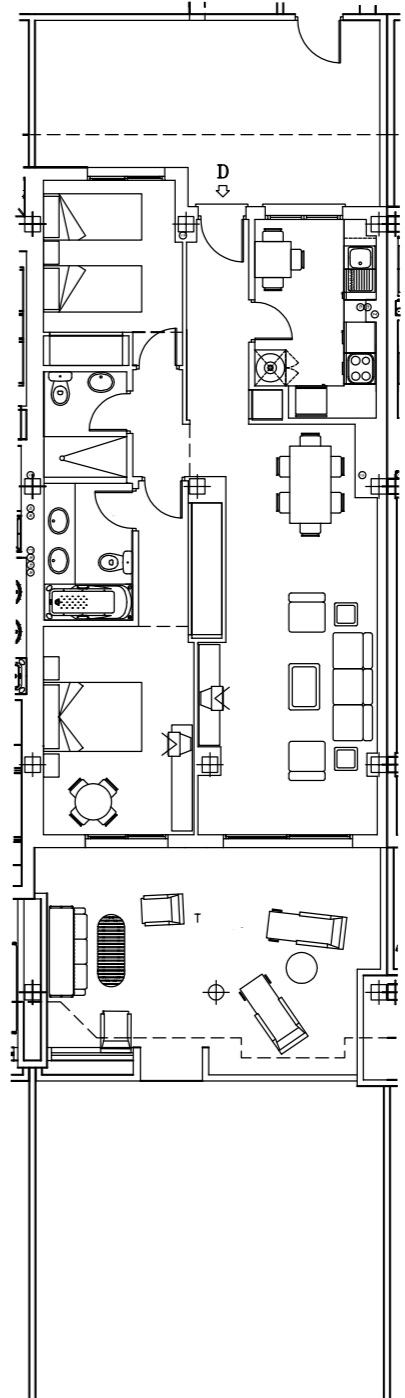
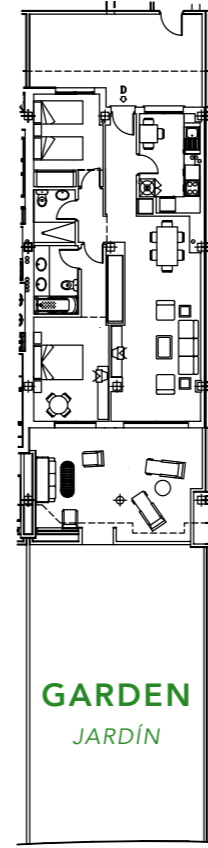
**3 BED  
GARDEN  
APARTMENT A**  
PLANTA BAJA A  
3 DORMITORIOS  
JARDIN



TIPO 1	
SUPERFICIES / M2	
Sup. Const. / Built interior:	122.44 m2
Sup. Terrazas / Terraces:	72.62 m2
Sup. Jardín / Garden:	45.30 m2



**2 BED  
GARDEN  
APARTMENT D**  
PLANTA BAJA D  
2 DORMITORIOS  
JARDÍN



TIPO 3	
SUPERFICIES / M2	
Sup. Const. / Built interior:	99.68 m2
Sup. Terrazas / Terraces:	48.57 m2
Sup. Jardín / Garden:	78.05 m2

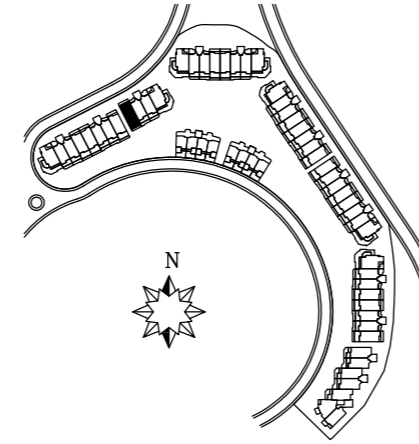
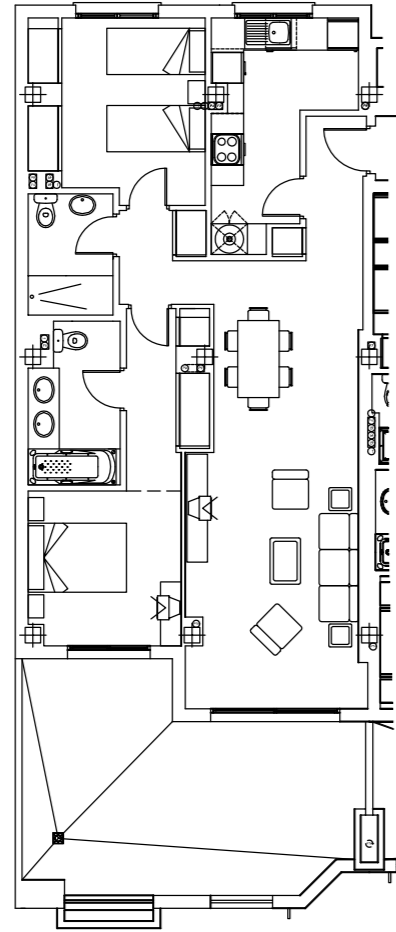
GARDEN  
JARDÍN





**2 BED  
FIRST FLOOR A**

PLANTA PRIMERA A  
2 DORMITORIOS



TIPO 14	
SUPERFICIES / M2	
Sup. Const. / Built interior:	100.84 m2
Sup. Terrazas / Terraces:	25.93 m2
Sup. Jardín / Garden:	--

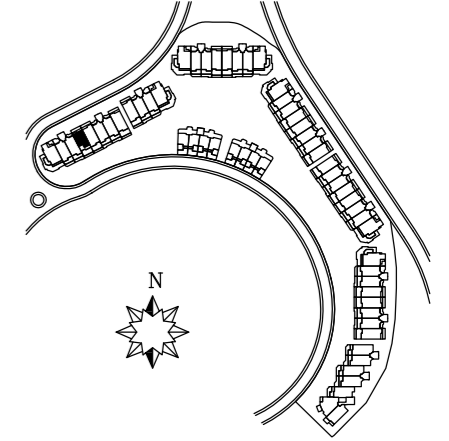
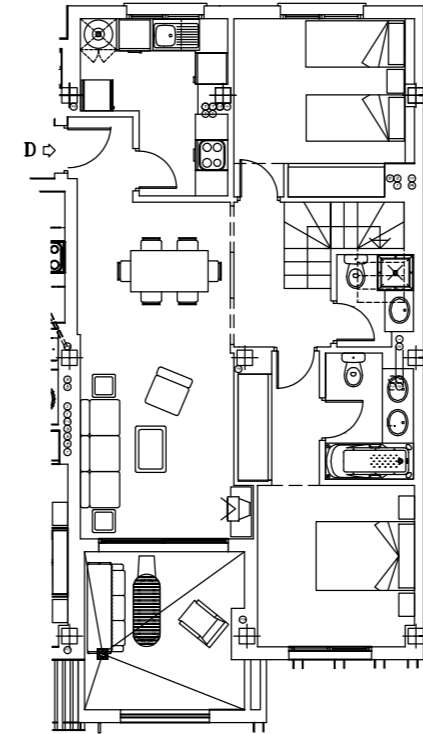
SUNSETGOLF

**FLOOR PLANS**

PLANOS

**2  
BED DUPLEX  
PENTHOUSE D**

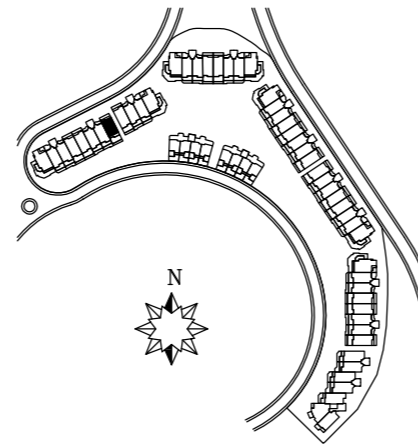
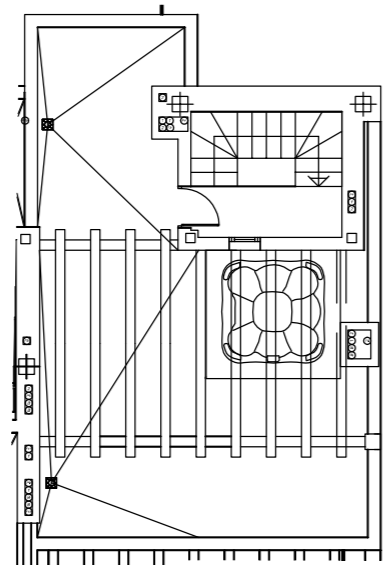
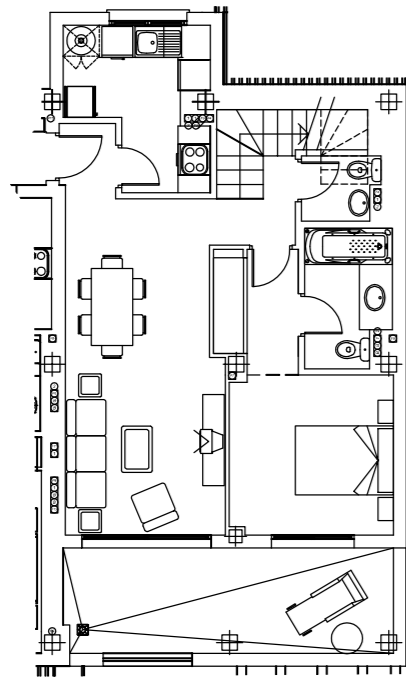
ÁTICO DUPLEX D  
2 DORMITORIOS



TIPO 17	
SUPERFICIES / M2	
Sup. Const. / Built interior:	96.67 m2
Sup. Terrazas / Terraces:	74.29 m2
Sup. Jardín / Garden:	--

SUNSETGOLF

**1  
BED DUPLEX  
PENTHOUSE D**  
ÁTICO DUPLEX D  
1 DORMITORIO

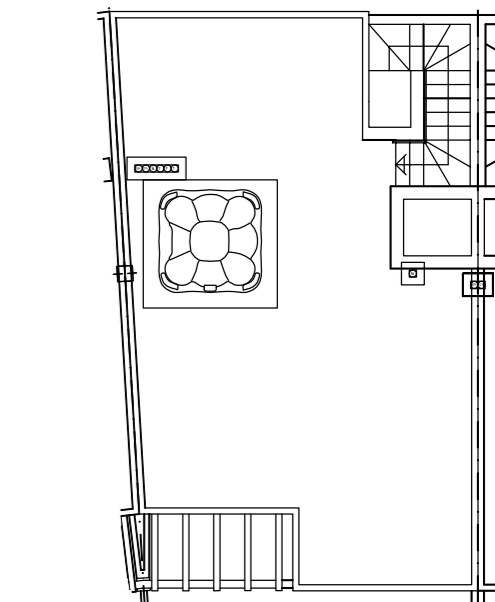
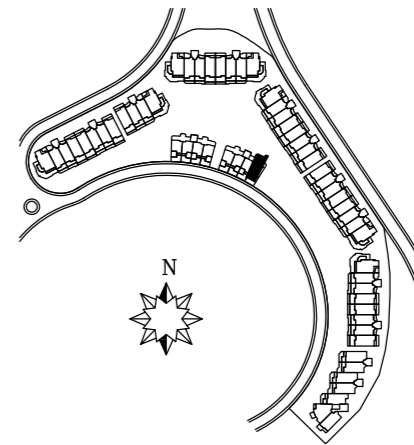
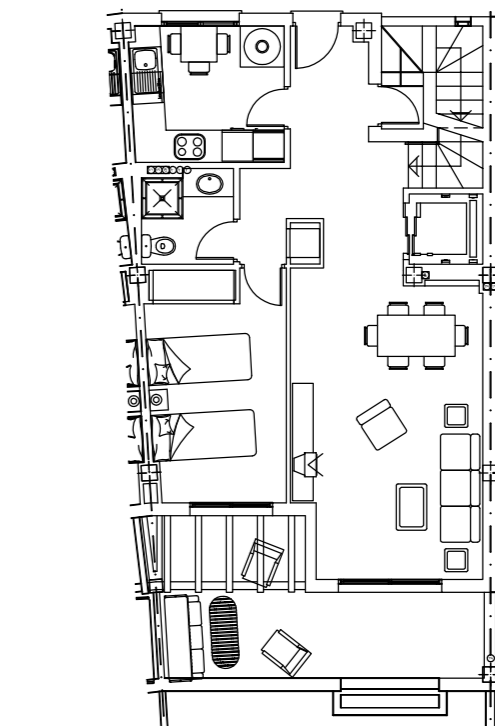
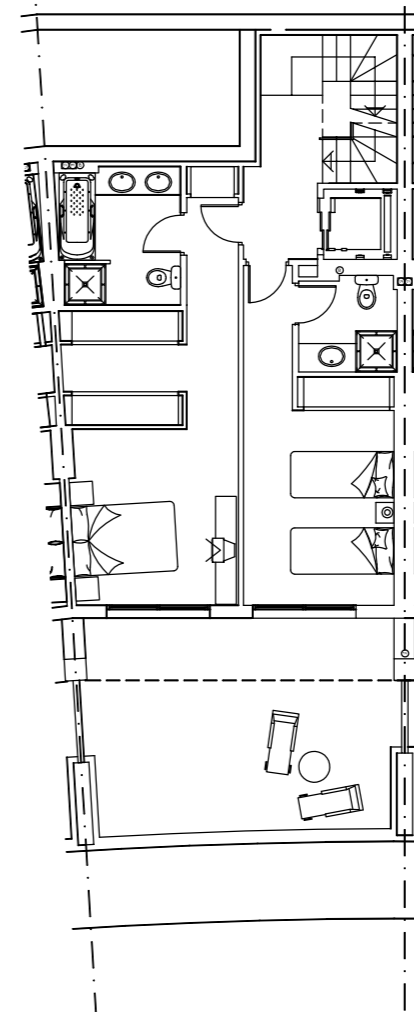
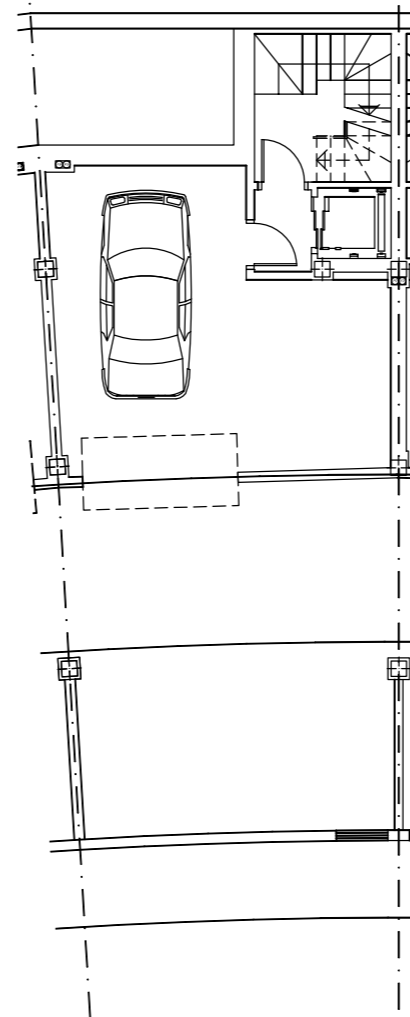


TIPO 20	
SUPERFICIES / M2	
Sup. Const. / Built interior:	78.03 m2
Sup. Terrazas / Terraces:	63.71 m2
Sup. Jardin / Garden:	--



**FLOOR PLANS**  
PLANOS

**3 BED  
TOWNHOUSE C**  
UNIFAMILIAR C  
3 DORMITORIOS



TIPO 43	
SUPERFICIES / M2	
Sup. Const. / Built interior:	239.89 m2
Sup. Terrazas / Terraces:	99.68 m2
Sup. Jardin / Garden:	--

